

PowerView™ - Model PV101-C Configuration Tool



Features

- Build custom configurations
- Easy-to-use Windows-based interface
- Add custom splash screens
- Tier 4 menu setup
- Add proprietary parameters
- Add supporting parameters outside SAE J1939 Parameters
- Add alternate languages
- Allows corrective action setup for DTCs
- Upload configurations from PV101-C to your PC
- Supports 10 languages including: English, Spanish, French, Italian, German, Russian, Chinese, Japanese, Brazilian Portuguese and Czech*

The **PowerView Model PV101 Configuration Tool** is a PC-based configuration software for the PV101-C display. Murphy's powerful display in the SAE J1939 MurphyLink® family of components, provides a window into modern electronic engines and transmissions. With the configuration tool, you can create custom configurations and upload them to the PV101-C without incurring engineering software development charges**.

The PV101-C Configuration Tool is an easy-to-use interface that enables you to modify features of the PV101-C including:

- Parameters - Allows users to create proprietary and supporting parameters and add them to their configurations along with the SAE J1939 parameters.
- Diagnostic trouble codes (DTC) - Allows the user select and use DTCs as well as add custom corrective actions.
- Service reminders - Allows the user to set service reminders
- Diesel particulate filter (DPF) - Allows users to modify messaging structure and icons
- Modbus gauges - Allows users to use a proprietary PVA gage if setup in the portion of the configuration tool.
- Engine configuration - Allows user to view the configuration of the engine via SAE J1939 PGN 65251.***
- *The configuration tool, itself, is only available in English; however, it supports all languages displayed in the PV101-C.

**NOTE: If configurations are outside the scope of the configuration tool, contact Murphy for a quotation. Normal NRE charges shall apply.

***NOTE: If supported by engine manufacturer.

Configurable Display Parameters

Add custom and proprietary parameters to the robust Murphy standard configuration provided. The following are some of the engine and transmission parameters already displayed by the PowerView (when applicable, consult engine or transmission manufacturer for SAE J1939 supported parameters). The PowerView can display these parameters and more in all available languages, as well as in English or Metric units.

- | | | |
|------------------------------------|-----------------------------------|---------------------------------------------------------|
| • Engine RPM | • Oil Pressure | • Transmission Oil Temperature |
| • Engine Hours | • Fuel Economy | • Transmission Gear Position |
| • Fuel Rate | • Throttle Position | • Active Service codes |
| • System Voltage | • Engine Manifold Air Temperature | • Stored Service Codes (when supported) |
| • % Engine Load at the Current RPM | • Current Fuel Consumption | • View Engine Configuration Parameters (when supported) |
| • Coolant Temperature | • Transmission Oil Pressure | |
| • Catalyst Level | • NMEA 2000 GPS Parameters | |

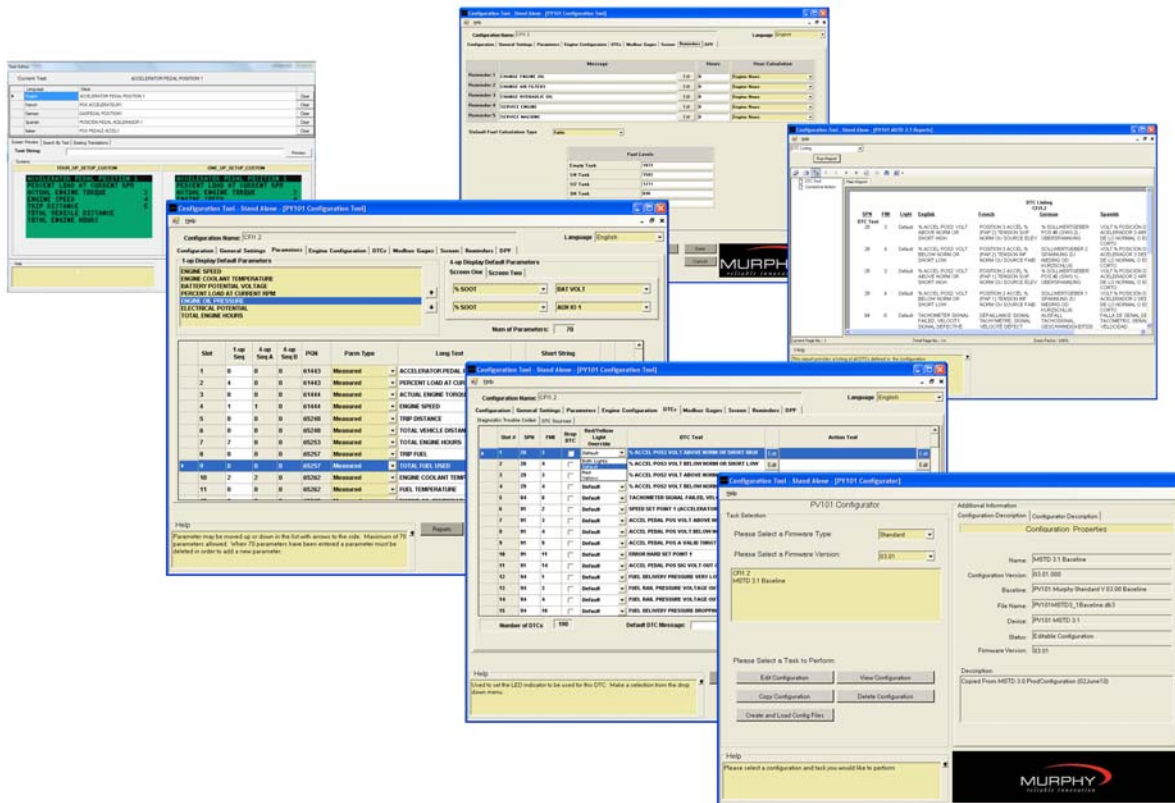
System Requirements

A USB 1.1 connection is required for transferring the configuration from PC to the PV 101.

While the configuration software will function on any PC or laptop running Windows, it will not perform transfers using the USB driver unless the operating system supports USB. USB supported operating systems include Win98SE, NT, XP, Vista and Windows 7.

The configuration software and USB driver provide efficient use of your hard drive, using only 3-5 MB of disk space after installation.

Example Screens



How to Order

P/N 78700435 - PV101-C Configuration Tool Kit

Shipping Weight: 2lbs (0.907kg)

Product Dimensions: 8-1/4" x 8-1/4" x 3-3/4" (210mm x 210mm x 96mm)

FW MURPHY
P.O. Box 470248
Tulsa, Oklahoma 74147 USA
Phone: +1 918 317 4100 Fax: +1 918 317 4266
E-mail: sales@fwmurphy.com

INDUSTRIAL PANEL DIVISION
Fax: +1 918 317 4124
E-mail: ipdsales@fwmurphy.com

MURPHY POWER IGNITION
Web site: www.murphy-pi.com

CONTROL SYSTEMS & SERVICES DIVISION
P.O. Box 1819
Rosenberg, Texas 77471 USA
Phone: +1 281 633 4500 Fax: +1 281 633 4588

FRANK W. MURPHY LTD.
Church Road, Laverstock
Salisbury, SP1 1QZ, UK
Phone: +44 1722 410055 Fax: +44 1722 410088
E-mail: sales@fwmurphy.co.uk
Web site: www.fwmurphy.co.uk

COMPUTRONIC CONTROLS
41 - 46 Railway Terrace
Nechells, Birmingham, B7 5NG, UK
Phone: +44 121 327 8500 Fax: +44 121 327 8501
E-mail: sales@computroniccontrols.com
Web site: www.computroniccontrols.com

www.fwmurphy.com

FW MURPHY INSTRUMENTS (HANGZHOU) CO., LTD.
77 23rd Street
Hangzhou Economic & Technological Development Area
Hangzhou, Zhejiang, 310018, China
Phone: +86 571 8788 6060 Fax: +86 571 8684 8878
E-mail: apsales@fwmurphy.com



USA-ISO 9001:2000 FM 28221
UK-ISO 9001:2000 FM 29422
Registered Facilities



Printed in U. S. A.